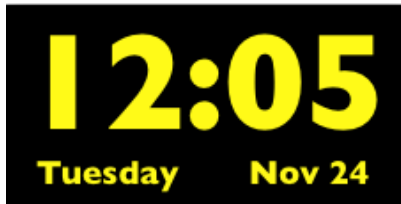


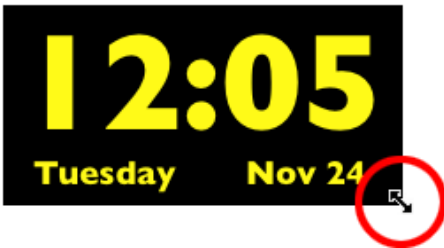
Welcome to BasicClock



BasicClock is just that—a simple, basic clock. It displays the time, day, and date. That's it. It's meant to sit unobtrusively in the corner of your screen and float over other windows so that you can always see it.

To move BasicClock around on your screen, drag it from the clock display. It remembers its position from launch to launch.

You can also change the size of BasicClock by grabbing it in the lower right corner and dragging to increase or decrease its size.



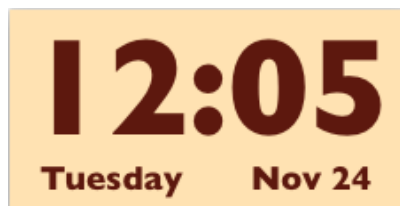
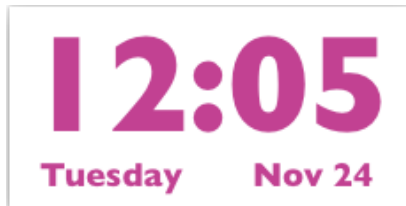
While you typically will keep BasicClock small and out of the way, you can make it quite large, which might be useful in a group setting where you want everyone to be able to see the clock from across the room. The Full Screen mode under the Display menu makes this easy.

While BasicClock's clock functions are simple, we've provided a number of ways to customize the *look* of BasicClock.

Colors menu

Colors	Display	Fonts	Favorites
Change Clock Color...			⌘C
Change Background Color...			⌘B

You can customize both the clock color and clock background from the Colors menu, creating thousands of color combinations for the clock.

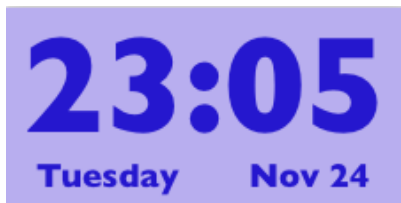


Display menu

Display	Fonts	Favorites
<input checked="" type="checkbox"/> 12 Hour		⌘1
<input type="checkbox"/> 24 Hour		⌘2
<input checked="" type="checkbox"/> Drop Shadow		⌘D
<input type="checkbox"/> Inner Shadow		⌘I
<input type="checkbox"/> None		
Border		
<input checked="" type="checkbox"/> Rounded Corners		
<input type="checkbox"/> None		
<input type="checkbox"/> Full Screen		⌘F

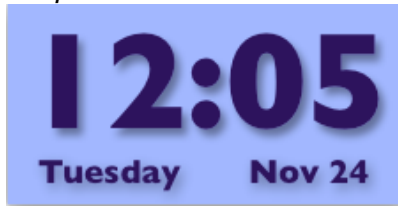
Using the Display menu and the Fonts menu (see below) you can create many additional customization options for your clock.

You can choose between 12 and 24 hour clock mode.

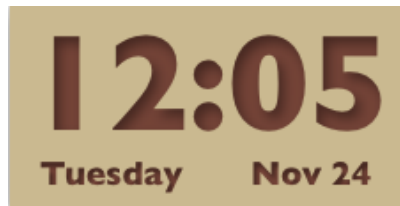


You can also add either a drop shadow or an inner shadow to your clock display. Each of these options gives your clock a sense of “depth”.

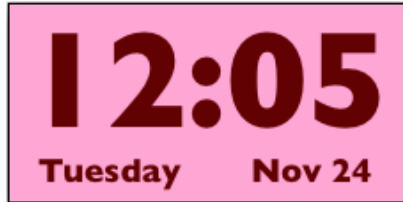
Drop Shadow



Inner Shadow



Additionally, you can place a thin border around the clock to help distinguish it from the background.



If you prefer the look of rounded corners, choose this option from the display menu.



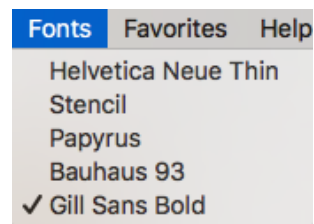
Note that you can either choose Border or Rounded Corners but not both.

If you are in a situation where you want to use your computer display to show a large clock visible to a room full of people, choose the Full Screen mode. This covers your screen with the clock. It's possible that some system or application windows will not be covered but generally this will turn your whole screen into a clock.

The Menubar and dock are hidden in Full Screen mode. Move your mouse to the top of the screen to reveal them.

Select Full Screen mode again to bring the clock back to its last size.

Fonts menu



The Fonts menu allows additional customization of SimpleClock. You may choose among five different fonts for the clock display. Pick a font that conveys the level of visibility,

practicality, or whimsy you desire.

Helvetica Neue Thin



Stencil



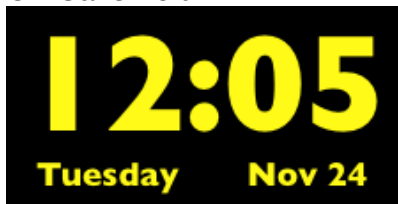
Papyrus



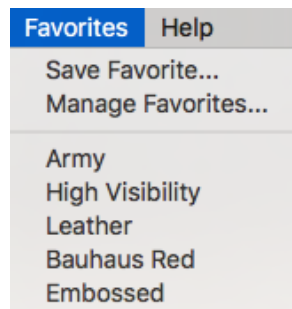
Bauhaus 93



Gill Sans Bold



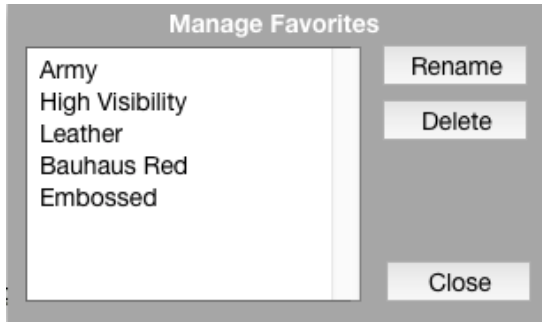
Favorites menu



By combining fonts, colors and display modes, you can create thousands of variations in how BasicClock displays the time. With so many possibilities, you might want to save some of your favorite settings to use later. The Favorites menu lets you save clock display settings and recall them easily.

Once you've created a setting you like, choose Save Favorite... from the Favorites menu. You'll be asked to give your favorite a name and it will then appear under the Favorites menu. Simply select that name, or any other that you have previously saved, and your clock will immediately change to reflect those settings.

Select Manage Favorites... to rename or delete favorites (option-Delete will delete all of the Favorites at one time).



Help menu

The Help menu displays this document.

BasicClock is free. Please send bug reports and comments to bornstein@designeq.com.

©2016 DESIGN EQ. ALL RIGHTS RESERVED.
Built with LiveCode. Portions (c) 2000-2011 RunRev Ltd, All Rights Reserved Worldwide.